



SRI SIVANI COLLEGE OF PHARMACY

(Under the Management of Sri Sivani Educational Society, Srikakulam)
(Estd.2007, Approved by PCI-New Delhi and Affiliated to JNTU, Gurajada-Vizianagaram)
N.H-16, Chilakapalem Jn., Etcherla Mandal, Srikakulam Dist - 532402.

JAMMI TREE

BOTINICAL NAME: *PROSOPIS CINERARIA*

FAMILY: Leguminosae

SYNONYMS:

ENGLISH: sponge tree

HINDI: Jammeechetto

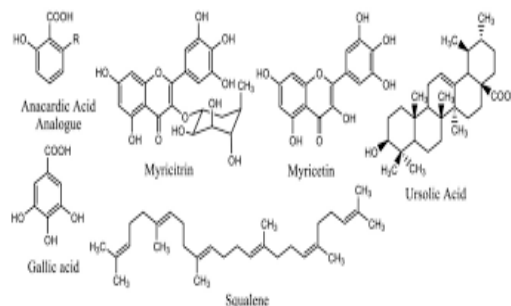
TAMIL: Jammi cettu

TELUGU: Jammi chettu



CHEMICAL CONSTITUENTS:

- ❖ The plant is rich in bioactive compounds such as heneicosanoic acid, methyl heptacosanoate, 4-hydroxy benzoic acid and methyl 2-methoxy-5-hydroxycinnamate, methyl 4-hydroxycinnamate and O-Coumaroylglycerol which are accountable for many pharmacological actions



USES:

- ❖ Skindiseases, blood purify
- ❖ Leaf has antibacterial, antihyperglycemic,
- ❖ Anti hyperlipidemic, and antioxidant
- ❖ Leprosy, dysentery, bronchitis, asthma
- ❖ Diabetes, anaemia, kidney & liver disorders
- ❖ The leaves also have some fungicidal and insecticidal
- ❖ Properties which can control fungi and insects attacking plants.
- ❖ Humans use the extract of leaves to kill intestinal parasitic
- ❖ Odder-Its leaves serve as valuable fodder for livestock
- ❖ During drought period